

**D-SERIES CRAWLER EXCAVATORS**  
**CX750D / CX750D ME**  
**STAGE V**

**CASE**  
CONSTRUCTION



**IT'S TIME**  
**FOR MORE**

[www.casece.com](http://www.casece.com)  
**EXPERTS FOR THE REAL WORLD**  
**SINCE 1842**

# HERITAGE

## A TRADITION OF INDUSTRY FIRSTS



## EXPERTS FOR THE REAL WORLD

### SINCE 1842

**1842** CASE is founded.

**1869** The first CASE portable steam engine - road construction is born.

**1957** The first factory - integrated loader/backhoe in the world: a CASE industry first.

**1969** CASE begins skid steer loader production.

**1992** Sumitomo becomes supplier to CASE Corporation distributing excavators ranging from 7 to 80 tons.

**1998** Global Alliance signed

between CASE Corporation and Sumitomo.

**2001** CASE introduces the first of its CX excavators, powerful new "thinking machines" designed to enhance productivity through onboard intelligence features.

**2007** CX210B is awarded the «Good Design Award» by the design Academy of Japan.

**2008** CX210B wins the 18th «Energy Conservation Award» from the Agency for Natural Resources and Energy of the Japanese

Ministry of Economy.

**2011** CASE becomes the first construction equipment manufacturer to offer both selective catalytic reduction and cooled exhaust gas recirculation as solutions to meet stringent emissions standards.

**2015** CASE launches the new "D series" Tier 4 final/ EU Stage IV Crawler Excavators.

**2018** Stage V production for models CX350D and above.



# CRAWLER EXCAVATORS D-NA BUILT TO LAST AND CONTROL



## HIGH RELIABILITY

Improved D-esign for D-urable performances

- The boom and arm have been redesigned according to the latest stress analysis criteria to reduce stress points.
- The undercarriage is built with high-tensile strength steel for long term durability to work in the toughest heavy duty applications.

## HIGH QUALITY

Accurate, simple and robust design for high durability

- True to CASE's enviable reputation for reliability and durability, the D-Series delivers leading design solutions and manufacturing quality.



## HIGH PRECISION AND CONTROLLABILITY

Smooth control with the CASE Intelligent Hydraulic System

The proven CASE Intelligent Hydraulic System (CIHS) delivers energy savings in all cycle time phases (digging, boom up and swing, dumping).

# D-SERIES CRAWLER EXCAVATORS



## CX750D ME MASS EXCAVATOR

A dedicated model for mass excavation provides outstanding breakout force performance. With a special heavy duty shorter boom and dipper and a bigger bucket cylinder and optimized kinematics, the CX750D ME works with larger buckets than the CX750D, delivering industry leading speed, productivity and efficiency.



## FAST CYCLES

High performance hydraulics control

- The new electrically controlled pumps deliver faster cycle times.
- Oil flow can be adjusted according to working needs, or increased smoothly while starting travel and boom down.
- As a result, the machine responsiveness to operation load is multiplied, resulting in cycle times 11% faster than the previous generation.



## HIGH VERSATILITY

Working modes easily adapt to every work load

- A** MODE for grading, lifting and precision work.
- H** MODE the best balance between productivity and fuel economy.
- SP** MODE extra speed and power for the most demanding jobs that require maximum productivity.

**Auto Power Boost** automatically increases hydraulic pressure according to the operation's demands.

Optimized retractable undercarriage

Increased track gauge width (3350 mm) for better lifting capacity.  
Width with retracted condition during transportation is 2740 mm.



# PRODUCTIVITY

## IT'S TIME FOR BIGGER PERFORMANCE



### HIGH EFFICIENCY: THE SECRET

Great performances with low fuel consumption

**CASE Intelligent Hydraulic System (CIHS)** reads continuously the load pressure through strategic sensors and like an ORCHESTRA DIRECTOR gives always and in real time the right balance for any type of job, providing solid fuel saving opportunities. It consists of 5 Energy Saving controls:

- Torque control decreases main pump loads to prevent a drop in engine rpm, with improved sensitivity to control.
- Boom Economy Control (BEC) increases fuel efficiency during boom lower and swing operations, like dump unloading
- Swing Relief Control (SWC) carefully manages the hydraulic power distribution in slewing operations.
- Spool Stroke Control (SSC) creates an automatic pressure adjustment during digging and leveling operations.
- Idle functions: the Auto Idle function lowers engine rpm after 5 seconds of lever inactivity whatever the throttle position, while the Idle Shutdown function shuts the engine down after a pre-setted time of inactivity. Both are manually switchable.



### CLEANER (STAGE V)

EU Stage V compliant CASE engines

- The new STAGE V engine meets the latest EU standards for engine exhaust emissions that sets new limit for particle number (PN) and further reduced particulate matter (PM) levels.
- Water separator sensor linked to a dedicated message on machine monitor to drain water when level in filter is too high
- New safety filter (maintenance free) to protect the engine from dust during the main filter replacement
- The closed circuit ventilation system make sure the oil gas are filtered, separated and sent back to the crankcase, avoiding dispersion into the air.
- Engine of the latest generation, electronically controlled with Variable Geometry Turbocharger, high pressure common rail with multi-injection engine ensures great performances and low fuel consumption.
- Large Adblue<sup>®</sup> tank allows longer working time without stopping for Adblue refill (5-6 fuel refills before a stop). With CASE no time is wasted and your refill is more efficient and safe.

# D-SERIES CRAWLER EXCAVATORS



## COMFORTABLE AND SAFE CAB

The ultimate interior cab configuration

- Superior cab structure with ample legroom for the operator.
- Fully adjustable workstation.
- New ergonomically designed high back seat with air suspension for excellent comfort.
- Optional seat tilting adjustment and seat heater.
- Top class features include the 178 mm colour LED Monitor, bluetooth tuner and Radio, spacious storage compartment, 12v accessory plug, clipboard holder, mobile phone holder, warm and cool box, fuse box service connection, storage tray and ergonomic arm rest.
- FOPS level II standard
- Wide offering of optional front guards.



## OUTSTANDING VISIBILITY & QUIET WORK ENVIRONMENT

- Outstanding visibility with ample glazed surface, right and rear camera
- Soundproof pressurised cab
- The cushioning system lowers noise and vibration levels for the operator's ultimate comfort.





# COMFORT RULES FIRST CLASS CAB AND SEAT



# D-SERIES CRAWLER EXCAVATORS



## CASE MAXIMUM VIEW MONITOR

option with its bird's eye and panoramic view improves operator's safety by:

- 270° wide vision
- 3 cameras
- 7 inch full color monitor
- Blind spots eliminated by image processing
- Led lighting package LED lights for increased visibility in low light conditions



## STANDARD HYDRAULIC REVERSABLE FAN

### Engine layout inversion

- The new layout made it possible to accommodate two wider radiators with tank & oil cooler / fuel cooler in parallel location opposite side of the Cabin assuring better cooling performance.
- The hydraulically-driven cooling fan contributes to lower noise output and improvements in fuel consumption. The reversing mode helps to reduce maintenance needs.





# SAFETY AND MAINTENANCE

## WORK SAFELY IN ALL CONDITIONS



### SAFE ACCESS TO UPPERCARRIAGE

Solid and robust platform and handrails

- Wide, robust and comfortable steps and ladders for safe access to the top of the hood.
- Solid handrail for protection on the top of the hood.
- Non-slip plates and top hood cover are supported by 2 gas pistons and secured by 2 mechanical stops when open.
- Solid platform (80 cm wide) on top of the engine compartment to provide a stable base for the technician working on the engine compartment.



### EASY MAINTENANCE

CASE stays «grounded»

- All filters and regular fill points are grouped for easy access.
- Engine oil change intervals set at 500 hours.
- Radiator and cooler mounted side by side for easy access.
- Standard 100 l/min refueling pump with automatic cut off.
- Optional hydraulic and engine oil sampling port for easy oil check.
- Battery Shutdown Switch for safe maintenance on the electrical system.
- All the D-series crawler excavators feature the Extended Maintenance System (EMS) bushings, providing 1,000 hour greasing intervals on all pins except the attachment linkage.



# MAIN REASONS TO CHOOSE THE D-SERIES



## THE SECRET FOR HIGH PRECISION AND CONTROLLABILITY

is the CASE Intelligent Hydraulics System (CIHS) which is the result of continuous pursuit of perfection of a legendary brand.

CASE is synonymous and reference in the market for its fastest cycles times, best energy saving performance and smooth control



## HIGH VERSATILITY

- Mass excavation available (CX750D ME) for outstanding breakout force
- Wide track gauge (3350 mm) for better lifting
- Four arm lengths options



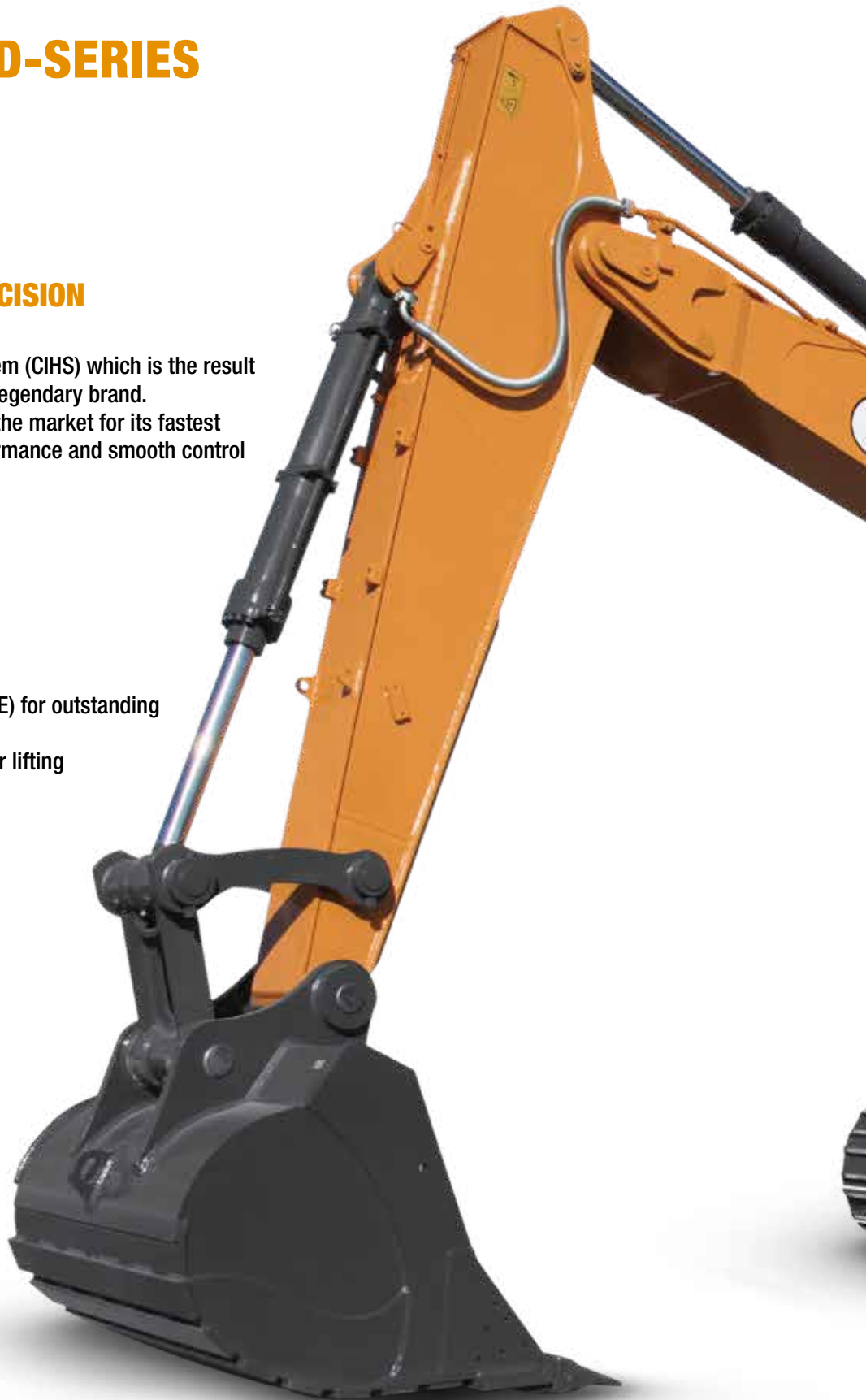
## MORE EFFICIENT MUSCLE BEHIND

- 512 HP engine power
- Top class productivity without compromising fuel efficiency
- New electronically controlled hydraulic pumps for outstanding responsiveness (11% faster than previous series)



## HIGH EFFICIENCY

- Energy saving system to take advantage of all fuel saving opportunities
- Large AdBlue tank (152 litres). Your refill is more efficient and safe
- Max torque value shifted to lower rpm (improved engine response)







## HIGH RELIABILITY

- Arm, boom and undercarriage have been developed and improved year over year with best design elements and materials for more durability, dispersing stress concentration
- Standard hydrostatic reversible fan to match the real cooling demand, reducing power absorption and reducing maintenance needs thanks to the reversing mode
- Side by side radiators improve cooling and are easily accessible



## BETTER VISIBILITY

- Standard rear camera
- Optional CASE maximum view monitor (270° rear & side view)
- New LED working light package, is more than three times brighter than its halogen equivalent



## COMFORTABLE AND SAFE CAB

- Extra spacious cab
- Fully adjustable workstation
- New high back seat
- New layout of the power plant reduces Cab inside Noise (Engine fan: far from Cab)



## SAFE OPERATION AND MAINTENANCE

- All filters now located in the pump compartment
- Wider catwalk for a safer maintenance
- Optional factory fitted travel alarm for greater safety on the jobsite
- New Fuel filter supply line with no need to flush after filter replacement
- Fuel prefilter Water sensor with dedicated message on Cabin monitor



## STAGE V ENGINE

in line with the latest EU standard for engine exhaust emissions:

- New ATS with DPD filter (Diesel Particulate Diffuser)
- New closed PCV system (Positive Crankcase Ventilation)



## THE SCIENCE BIT

The CASE SiteWatch telematics system uses a high-tech control unit mounted on each machine to collate information from that machine and from GPS satellites. This data is then sent wirelessly through the mobile communication networks to the CASE Telematics Web Portal.



## SiteWatch: centralised fleet control benefits at your fingertips

### Measure your true asset availability and optimise it

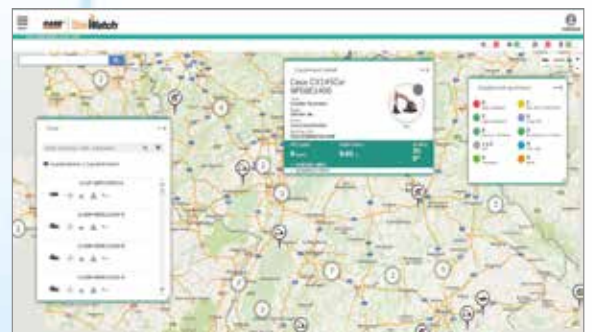
- Eliminate the “phantom fleet”: SiteWatch allows to identify spare units or under loaded machines on each site.
- Become able to reallocate units where they are more needed.
- Forward Maintenance Planning is easier since the actualised working hours are always available.
- Extend the benefits of SiteWatch to the rest of your fleet: SiteWatch can be installed on the units of other brands as well.

### Challenge your Total Cost of Ownership!

- Being able to compare the fuel usage of different machine types will allow you choose the right equipment.
- Save on transport costs with planned and grouped maintenance tasks.
- Peace of mind, optimised uptime and lower repair costs: with preventive maintenance you can for example be alerted if the engine needs to be serviced and avoid a disruptive breakdown.
- Be able to compare your asset Return On Investment on different sites.
- Your equipment is used only during working hours. You can set up alerts so that you know if it is in use during the weekend or at night.
- Integrate with the programmed maintenance package, so that you can be sure every machine is at the right place at the right time.

### More Safety, Lower Insurance Premium

- Keep thieves away: dissuade them from attacking your asset because it is geo-localised. SiteWatch is hidden so that thieves can't find it quickly.
- Your fleet is used only where you decide. You can define a virtual fence and receive an email when a machine exits that perimeter.





# STANDARD AND OPTIONS

## STANDARD EQUIPMENT

### ENGINE

Isuzu 6-cylinder turbo-charged diesel  
EU stage V Certified  
Selective Catalytic Reduction (SCR)  
Diesel Oxidation Catalyst (DOC)  
Cooled Exhaust Gas Recirculation (CEGR)  
Diesel Particulate Diffuser (DPD)  
VGT turbocharger  
Electronic fuel injection  
High pressure common rail system  
Neutral safety start  
Auto-engine warm up, emergency stop  
Glow-plug pre-heat  
Engine Protection Feature (EPF)  
Dual-stage fuel filtration  
Dual element air filter  
Remote oil filter  
Green plug oil drain  
500-hour engine oil change interval  
24-Volt system  
Battery disconnect switch  
External Fuel and AdBlue gauges  
Fuel cooler  
Fuel filter restriction indicator  
Fuel prefilter Water sensor with dedicated message on Cabin monitor  
Idle start  
Radiator, oil cooler, intercooler – protective Screen  
Hydraulic reversing cooling fan  
Refueling Pump

### FUEL ECONOMY SYSTEMS

Engine Idle/Fuel Economy System:  
Auto-idle  
One-touch idle  
Auto-idle shut-down  
Torque control  
Boom Economy Control (BEC)  
Swing Relief Control (SWC)  
Spool Stroke Control (SSC)

### HYDRAULICS

Electronically controlled hydraulic pumps  
Auto power boost  
Auto travel speed change  
Selectable work modes  
Overload warning device  
ISO pattern controls  
Pre-set auxiliary pump settings  
Switch controlled auxiliary selection  
Auxiliary valve  
Hydraulic filter restriction indicator  
Oil cooler  
5,000 hour hydraulic oil change interval  
2,000 hour hydraulic filter change interval

### UPPERSTRUCTURE

ISO mirrors  
Handrail - RH access  
Isolation mounted cab (fluid and spring)  
Lifting eyes for counterweight  
Lockable fuel cap, service doors and toolbox  
Rear view safety camera

### OPERATOR STATION

ROPS protection  
Catwalks  
FOPS guard OPG level II  
Pressurized cab  
Retractable roller screen provision  
Tempered safety glass  
One-touch lock front window  
Sun visor&rain deflector  
AC/heat/defrost w/auto climate control  
Hot&coolbox, cup holder & ashtray  
Interior dome light  
Cloth covered air-suspension high-back seat  
Sliding seat – 90 mm  
Seat-belt  
Adjustable armrests  
Tilting consoles - 4-position

Low-effort joystick controls  
Sliding cockpit 180 mm  
Auxiliary select system  
Aux-in port for personal electronics  
Multifunction LED color monitor (180 mm)  
28 selectable languages for monitor  
Anti-theft system (start code system)  
Rubber floormat  
12-volt electric socket  
24-volt cigarette lighter  
One-piece right hand window  
Working lights (boom& upperstructure)  
Cab top working lights  
Windshield wiper / washer  
Storage compartments  
On-board diagnostic system

### ATTACHMENTS

Standard boom 7.7 m (CX750D)  
Mass Excavation boom 6.5 m (CX750D MASS)  
HD arm 3.55 m (CX750D)  
HD arm 4.11 m (CX750D)  
Arm 5.00 m (CX750D)  
HD Mass Excavation arm 3.02 (CX750D and CX750D MASS)

### RETRACTABLE CHASSIS

650 mm double grouser  
Full track guide

## OPTIONAL EQUIPMENT

### HYDRAULICS

Low-flow circuit, proportional control  
Single acting pedal activated hammer circuit  
Single acting hammer circuit with electrical proportional control  
Multifunction (hammer/high flow) circuit with electrical proportional control

### ATTACHMENTS

Hydraulic quick coupler provision  
Safety valves and bucket linkage with hook

### OPERATOR STATION

Front cab guard - vertical bars (OPG level 2)  
Front cab guard - vertical bars (OPG level 1)  
Front mesh screen  
Travel alarm  
AM/FM CD/radio with antenna and 2-speakers  
LED working lights

### UNDERCARRIAGE

Track shoes 750 mm double grouser  
Track shoes 900 mm double grouser

### TELEMATICS

Three years SiteWatch “Advanced” subscription with remote monitoring and one user's licence

### OTHERS

Engine and hydraulic oil sampling ports  
Roller screen for rear cab window available through CNHI parts (DIA kit)  
Right view safety camera







# CX D-SERIES

## CX750D - CX750D ME

### ENGINE

CX750D

CX750D ME

Model \_\_\_\_\_ ISUZU VE-6WG1X  
 Type \_\_\_\_\_ Water-cooled, 4-cycle diesel, 6-cylinder in line, high pressure common rail system (electric control), Turbocharger with air cooled intercooler, without cooling fan, SCR & DPD system

Number of cylinders / Displacement (l) \_\_\_\_\_ 6/15.7

Emissions level \_\_\_\_\_ EU N°2016/1628 STAGE V

Bore & stroke (mm) \_\_\_\_\_ 147 x 154

#### Rated flywheel horse power

ISO 14396 (kW / hp) \_\_\_\_\_ 382 / 512 at 1800 min<sup>-1</sup>

With fan pump (kW / hp) \_\_\_\_\_ 343 / 460

#### Maximum torque

ISO 14396 (Nm) \_\_\_\_\_ 2090 Nm at 1450 min<sup>-1</sup>

### HYDRAULIC SYSTEM

Main pumps \_\_\_\_\_ 2 variable displacement axial piston pumps with regulating system

Max. oil flow (l/min) \_\_\_\_\_ 2 x 472 at 1800 min<sup>-1</sup>

#### Working circuit pressure

Boom/Arm/Bucket (MPa) \_\_\_\_\_ 31.4

With auto power boost (MPa) \_\_\_\_\_ 34.3

Swing circuit (MPa) \_\_\_\_\_ 27.9

Travel circuit (MPa) \_\_\_\_\_ 34.3

#### Pilot pump \_\_\_\_\_ 1 gear pump

Max. oil flow (l/min) \_\_\_\_\_ 27

Working circuit pressure (MPa) \_\_\_\_\_ 4.4

#### Boom Cylinders

Bore (mm) \_\_\_\_\_ 190

Stroke (mm) \_\_\_\_\_ 1805

#### Arm Cylinders

Bore (mm) \_\_\_\_\_ 210

Stroke (mm) \_\_\_\_\_ 2055

#### Bucket Cylinders

Bore (mm) \_\_\_\_\_ 185 | 200

Stroke (mm) \_\_\_\_\_ 1465 | 1450

### SWING

Maximum swing speed (min<sup>-1</sup>) \_\_\_\_\_ 6.7

Swing torque (kNm) \_\_\_\_\_ 241

### UNDERCARRIAGE

High travel speed (km/h) \_\_\_\_\_ 4.3

Low travel speed (km/h) \_\_\_\_\_ 3.0

Drawbar pull (kN) \_\_\_\_\_ 449

Track shoes \_\_\_\_\_ 650 mm, 750 mm or 900 mm double grouser shoes

CX750D

CX750D ME

### CIRCUIT AND COMPONENT CAPACITIES

Fuel tank (l) \_\_\_\_\_ 900

Hydraulic system (l) \_\_\_\_\_ 650

Hydraulic reservoir (l) \_\_\_\_\_ 310

Adblue tank (l) \_\_\_\_\_ 152

### SOUND LEVEL

External guaranteed sound level

(EU Directive 2000/14/EC) \_\_\_\_\_ LwA 107 dB(A)

Operator cab sound pressure level

(ISO 6396) \_\_\_\_\_ LpA 72 dB(A)

### WEIGHT AND GROUND PRESSURE

with 7.70 m Boom, 3.55 m Arm, 3.3 m<sup>3</sup> Heavy Duty bucket, 650 mm grouser shoes, operator, fluids, full fuel tank, and FOPS level 2 guard.

CX750D

Weight

Ground pressure

72000 kg

0,106 MPa

With 6.58 m Boom, 3.02 m Arm, 4.2 m<sup>3</sup> Rock bucket, 650 mm grouser shoes, operator, fluids, full fuel tank, and FOPS level 2 guard.

CX750D ME

Weight

Ground pressure

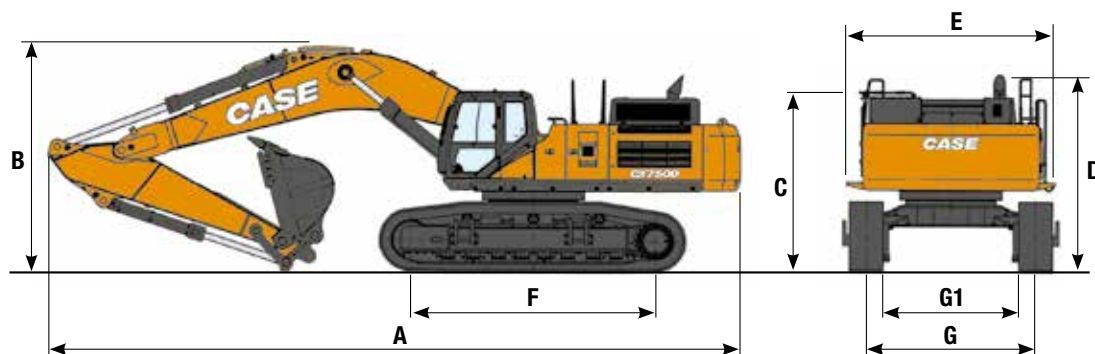
72850 kg

0,107 MPa

Counterweight 10400 kg

# SPECIFICATIONS

## GENERAL DIMENSIONS

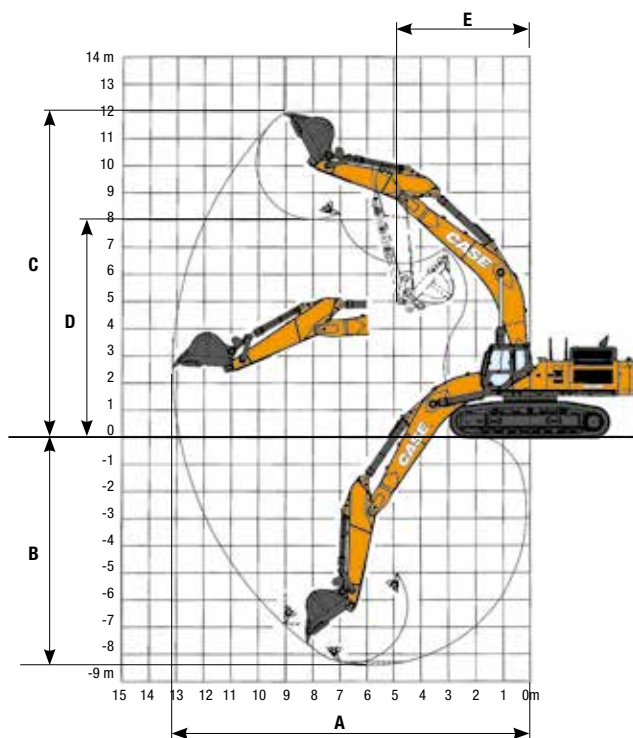


		Arm 3.55 m	Arm 3.02 m	Arm 4.11 m	Arm 5.00 m
A Overall length (with attachment)	mm	13370	13380	13350	13250
B Overall height (to top of boom)	mm	4320	4440	4590	5050
C Cab height	mm	3590	3590	3590	3590
D Overall height (to top of guardrail)	mm	3950	3950	3950	3950
Upper structure overall width (without catwalk)	mm	3700	3700	3700	3700
E Upper structure overall width (with catwalk)	mm	4170	4170	4170	4170
F Wheel base (center to center of wheels)	mm	4710	4710	4710	4710
G Track gauge (Extended)	mm	3350	3350	3350	3350
G1 Track gauge (Retracted)	mm	2740	2740	2740	2740
Undercarriage overall width (Extended) (with 650 mm shoes)	mm	4000	4000	4000	4000
Undercarriage overall width (Retracted) (with 650 mm shoes)	mm	3390	3390	3390	3390
Tail swing radius	mm	4050	4050	4050	4050

		Arm 3.02 m
A Overall length (with attachment)	mm	12250
B Overall height (to top of boom)	mm	4960
C Cab height	mm	3590
D Overall height (to top of guardrail)	mm	3950
Upper structure overall width (without catwalk)	mm	3700
E Upper structure overall width (with catwalk)	mm	4170
F Wheel base (center to center of wheels)	mm	4710
G Track gauge (Extended)	mm	3350
G1 Track gauge (Retracted)	mm	2740
Undercarriage overall width (Extended) (with 650 mm shoes)	mm	4000
Undercarriage overall width (Retracted) (with 650 mm shoes)	mm	3390
Tail swing radius	mm	4050



## PERFORMANCE DATA



<b>CX750D</b>		<b>Arm 3.55 m</b>	<b>Arm 3.02 m</b>	<b>Arm 4.11 m</b>	<b>Arm 5.00 m</b>
Boom length	mm	7700	7700	7700	7700
Arm length	mm	3550	3020	4110	5000
A Maximum reach	mm	13070	12780	13630	14450
B Max digging depth	mm	8400	7870	8970	9850
C Max digging height	mm	11630	12100	11970	12280
D Max dumping height	mm	7810	8090	8110	8400
E Min. Swing radius	mm	5810	5830	5730	5710

<b>CX750D ME</b>		<b>Arm 3.02 m</b>
Boom length	mm	6580
Arm length	mm	3020
A Maximum reach	mm	11730
B Max digging depth	mm	7180
C Max digging height	mm	11060
D Max dumping height	mm	6990
E Min. Swing radius	mm	5150

## DIGGING FORCE (ISO 6015)

<b>CX750D</b>		<b>Arm 3.55 m</b>	<b>Arm 3.02 m</b>	<b>Arm 4.11 m</b>	<b>Arm 5.00 m</b>
Arm digging force	kN	259	289	233	202
with auto power up	kN	283	316	254	220
Bucket digging force	kN	306	306	307	307
with auto power up	kN	334	334	335	335

<b>CX750D ME</b>		<b>Arm 3.02 m</b>
Arm digging force	kN	281
with auto power up	kN	307
Bucket digging force	kN	335
with auto power up	kN	366

# CX D-SERIES

## CX750D - CX750D ME

### CX750D

#### HEAVY DUTY BUCKETS (DIRECT MOUNT)

CAPACITY (ISO7451 HEAPED)	WIDTH	WEIGHT	ARM 3.02 m	ARM 3.55 m	ARM 4.11 m	ARM 5.00 m
2.70 m <sup>3</sup>	1450 mm	3140 kg	○	○	○	●
3.00 m <sup>3</sup>	1600 mm	3350 kg	○	○	●	■
3.30 m <sup>3</sup>	1750 mm	3510 kg	●	●	■	■
3.60 m <sup>3</sup>	1900 mm	3650 kg	●	■	■	×

#### ROCK BUCKETS (DIRECT MOUNT)

CAPACITY (ISO7451 HEAPED)	WIDTH	WEIGHT	ARM 3.02 m	ARM 3.55 m	ARM 4.11 m	ARM 5.00 m
3.00 m <sup>3</sup>	1600 mm	3590 kg	○	●	●	■
3.30 m <sup>3</sup>	1750 mm	3750 kg	⊙	●	■	×
3.60 m <sup>3</sup>	1900 mm	3960 kg	●	■	×	×

○ Rated material density up to 2 ton/m<sup>3</sup> ⊙ Rated material density up to 1.8 ton/m<sup>3</sup> ● Rated material density up to 1.6 ton/m<sup>3</sup>  
 ■ Rated material density up to 1.2 ton/m<sup>3</sup> × Not applicable

### CX750D ME

#### HEAVY DUTY BUCKETS (DIRECT MOUNT)

CAPACITY (ISO7451 HEAPED)	WIDTH	WEIGHT	ARM 3.02 m
3.95 m <sup>3</sup>	1850 mm	3750 kg	○
4.20 m <sup>3</sup>	2000 mm	4000 kg	⊙
4.60 m <sup>3</sup>	2200 mm	4200 kg	●

#### ROCK BUCKETS (DIRECT MOUNT)

CAPACITY (ISO7451 HEAPED)	WIDTH	WEIGHT	ARM 3.02 m
3.95 m <sup>3</sup>	1850 mm	3980 kg	○
4.20 m <sup>3</sup>	2000 mm	4260 kg	⊙

○ Rated material density up to 2 ton/m<sup>3</sup> ⊙ Rated material density up to 1.8 ton/m<sup>3</sup> ● Rated material density up to 1.6 ton/m<sup>3</sup>



# LIFTING CAPACITY

## CX750D - CX750D ME

Front. Side	REACH													
	2 m		4 m		6 m		8 m		10 m		12 m		At max reach	

### RTC UNDERCARRIAGE - Super long arm 5.0 m length, 650 mm shoes. Maximum reach 12.40 m

10.0 m															10120*	10120*	9.81
8.0 m									11750*	11750*					9640*	9640*	11.07
6.0 m									12330*	11670					9590*	8560	11.86
4.0 m																	
2.0 m																	
0 m																	
-2.0 m																	
-4.0 m																	
-6.0 m																	

### RTC UNDERCARRIAGE - Long arm 4.11 m length, 650 mm shoes. Maximum reach 11.50 m

10.0 m															13150*	13150*	8.75
8.0 m															12440*	11430	10.14
6.0 m															12390*	9720	11
4.0 m															12560	8850	11.44
2.0 m															12170	8510	11.52
0 m															12440	8660	11.24
-2.0 m															13520	9380	10.57
-4.0 m															13890*	11120	9.43
-6.0 m															12870*	12870*	7.6

### RTC UNDERCARRIAGE - Standard arm 3.55 m length, 650 mm shoes. Maximum reach 11.00 m

8.0 m															14220*	12640	9.49
6.0 m															14030*	10570	10.41
4.0 m															13550	9550	10.87
2.0 m															13120	9180	10.95
0 m															13460	9370	10.65
-2.0 m															14740*	10280	9.95
-4.0 m															14550*	12520	8.73
-6.0 m															12720*	12720*	6.71

### RTC UNDERCARRIAGE - Short arm 3.0 m length, 650 mm shoes. Maximum reach 10.70 m

10.0 m															16360*	16360*	7.58
8.0 m															15220*	13150	9.16
6.0 m															14820*	10910	10.1
4.0 m															14010	9850	10.58
2.0 m															13580	9490	10.67
0 m															14020	9760	10.36
-2.0 m															14670*	10820	9.63
-4.0 m															13820*	13470	8.36

### RTC UNDERCARRIAGE - ME Short arm 3.0 m length, 650 mm shoes. Maximum reach 9.53 m

8.0 m															16730*	16730*	7.78
6.0 m															16020*	13800	8.88
4.0 m															16310*	12170	9.42
2.0 m															16580	11650	9.51
0 m															17280	12060	9.17
-2.0 m															17350*	13790	8.33
-4.0 m															15970*	15970*	6.82

\* The above loads (kg) are compliant to the ISO standards and refer to the excavator equipped without bucket. The indicated loads are no more than 87% of hydraulic system lift capacity or 75% of static tipping load. Values marked with an asterisk (\*) are limited by the hydraulic lifting capacity.

www.casece.com  
**EXPERTS FOR THE REAL WORLD**  
**SINCE 1842**

**CASE**  
CONSTRUCTION



Form No. 20191GB - MediaCross Firenze - 12/18

**CNH INDUSTRIAL  
DEUTSCHLAND GMBH**  
Case Baumaschinen  
Benzstr. 1-3 - D-74076 Heilbronn  
DEUTSCHLAND

**CNH INDUSTRIAL FRANCE, S.A.**  
16-18 Rue des Rochettes  
91150 Morigny-Champigny  
FRANCE

**CNH INDUSTRIAL - UK**  
First Floor, Barclay Court 2,  
Heavens Walk,  
Doncaster - DN4 5HZ  
UNITED KINGDOM

**CNH INDUSTRIAL - SOUTH AFRICA**  
Waterfall Business Park  
Bekker Street, Howick Close  
1685 Midrand - Johannesburg  
REPUBLIC OF SOUTH AFRICA

**CNH INDUSTRIAL  
MAQUINARIA SPAIN, S.A.**  
Avenida Aragón 402  
28022 Madrid  
ESPAÑA

**CNH INDUSTRIAL ITALIA SPA**  
Strada di Settimo, 323  
10099 San Mauro Torinese (TO)  
ITALIA

**CASE CUSTOMER CENTRE  
PARIS**  
RN 330 - Penchard  
77122 - Monthyon  
FRANCE

**CNH INDUSTRIAL - MIDDLE EAST**  
DAFZA - Dubai Airport Free Zone  
West Wing 4 B, Office 642  
P.O. Box 54588, Dubai,  
UNITED ARAB EMIRATES

**NOTE:** Standard and optional fittings can vary according to the demands and specific regulations of each country. The illustrations may include optional rather than standard fittings - consult your Case dealer. Furthermore, CNH Industrial reserves the right to modify machine specifications without incurring any obligation relating to such changes.

Conforms to directive 2006/42/EC

**CASE**  
**00800-2273-7373**

The call is free from a land line.  
Check in advance with your Mobile Operator if you will be charged. Toll free number not available from all calling areas.

