

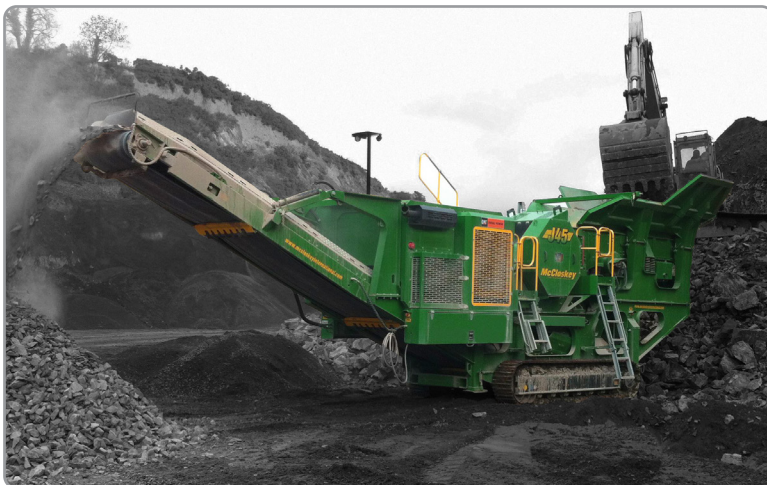
J45

HIGH PRODUCTION JAW CRUSHER

The McCloskey™ J45 high capacity Jaw Crushers feature a true 45" x 27" jaw. With both level and load sensors the J45 ensures the most efficient material handling across applications. Optimized for Type 1 crushing applications, the J45 features a heavy duty bofar design and pan feeder chutes with steeper angles to reduce material sticking.

The J45 boasts a high capacity hopper with close to 8 cubic yards (6 m³) capacity mounted over a vibrating feeder. The main conveyor features easy access heavy duty skirting and is closer to the ground level for ease of access and maintenance.

Rugged and versatile, the J45 offers field-tested reliability required for the toughest projects around the globe.



CONTROL PANEL

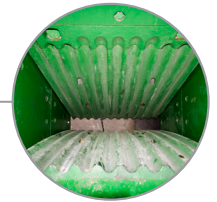
User friendly waterproof and dustproof control panel. Allows monitoring of pressures, fluid levels and fuel consumption. Provides push button control of jaw, track and feeder functions.



42" EXTENDED CONVEYOR
Extended 42" main conveyor as standard, giving large stockpile capacity. Conveyor lowers and raises hydraulically.

JAW CRUSHER

True 45" x 27" jaw with reversible hydrostatic drive, reversible jaw plates, and twin hydraulic ram wedge closed side setting (CSS) adjust.



FEEDER
Folding hopper mounted over vibrating feeder with integral pre-screen. Feeder rate can be regulated manually or automatically by load sensing jaw.

CRUSHER PRE-SCREEN

Optional independent crusher pre-screen maximizes crusher efficiency and delivers screened product via side conveyor.



IDEAL TRANSPORT SIZE
At only 2.5 m wide, the J45 is easily transported between job sites.

Engine	350 hp (261 kW) Diesel
Transport Height	11' 1.8" (3.40m)
Transport Length	47' 5.9" (14.48m)
Transport Width	8' 2.5" (2.50m)
Weight - w/ magnet & side conveyor	96,783 lb (43,900kg)
Crushing Chamber	45" (wide) x 27" (pitman opening)
Stockpile Height - Main Conveyor	12' 8.7" (3.88m)
Stockpile Height - Side Conveyor	8' 2.3" (2.50m)
Optional Prescreen Feeder	41.9"x75.5" (1.06mx1.92m)