

DEMOLITION GOES COMPACT

CX135E XRD

CASE Special Applications



Operating Weight

14,8t

Max. Power

73 hp

Max Height

14m

CASE
CONSTRUCTION

DEMOLISH AT UP TO 14m

WELL PROTECTED

Thanks to the demolition guards, the armored front glass and the cab guards.

ZERO TAIL SWING

Enhanced stability is achieved with 4 t of counterweight, including 0.5 t of internal counterweight, ensuring zero tail swing when the undercarriage is extended.

STABILITY & SAFETY

Low center of gravity design delivers excellent stability across its working range.

CX135E XRD also features an overload sensing alarm ensuring safer operation, tailored to demolition works.

30° TILTING CAB

For direct view on the high reach area.

RETRACTABLE UNDERCARRIAGE

For easy transport and access to confined spaces.



OR DIG

SINGLE ARM OR TWO SWAPPABLE ARMS

The CASE CX135E XRD is offered in two boom configurations:

- a single high-reach demolition arm designed for efficiency and cost savings
- or two swappable arms for increased versatility, featuring a quick hydraulic coupling system for both the arm and hoses, allowing easy switching between
 - the high-reach demolition arm
 - the standard arm with a 2-piece boom suitable for lower demolition and excavation tasks.



EXTRA VISIBILITY: 2 DEMOLITION CAMS AND A MAXI DISPLAY

When direct visibility is impossible the two demolition cams located on the boom and arm provide additional visibility on the attachment thanks to an additional 10,4" display in the cab with either split screen or full screen view



CONTROLLABILITY & MULTIFUNCTION DESIGN

Experience excellent stability and precision across the entire working range.

Take control with multifunction joysticks and a vibrant color display that bring enhanced accuracy to your demolition attachments. Easily fine-tune settings and save custom configurations for seamless transitions—maximizing efficiency and performance on every job.



JOYSTICK CONTROL OF CAB TILT

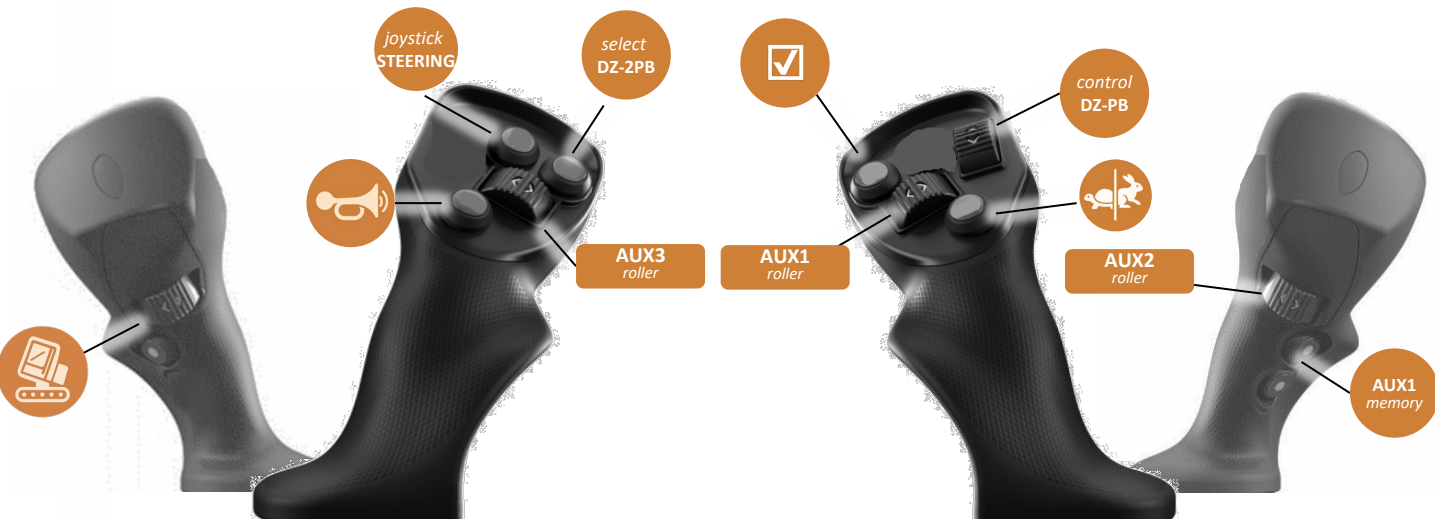
A roller behind the left joystick enables quick and easy cab tilts



- Enjoy a premium seat and intuitive controls, featuring a 7" color display and two jog shuttle for precise engine speed and auto-idle management and display navigation.
- Equipped with electronic Open Center (e.O.C.)—the **world's most advanced hydraulic system** in its class—you can fine-tune every function and store detailed attachment settings, a major advantage for demolition professionals using multiple tools.
- **Additional smart features** like an electric fuel pump, auto-stop function, powerful LED lighting, and more make every workday smoother, safer, and more efficient.

WORKING ENVIRONMENT 5.0

STEP INTO A NEXT-GENERATION OPERATOR EXPERIENCE.



ADVANCED MULTIFUNCTIONAL GRIPS WITH 5 ROLLERS

Experience unparalleled precision with these grips, designed for intuitive control of AUX1, AUX2, and AUX3—each finger operating independently for seamless, simultaneous command. They offer multiple advanced features without ever having to lift your hand, ensuring effortless operation and unmatched efficiency.

SEAT MOUNTED CONSOLES, PREMIUM SEAT

Enjoy a premium seat with comfortable and accurate seat mounted control consoles.

7" COLOR TILTABLE TOUCHSCREEN WITH BUILT-IN REAR VIEW

This vibrant 7" screen can be tilted to enhance visibility in various lighting conditions. More than just a display, it functions as an onboard computer allowing precise adjustment of the machine's performance.

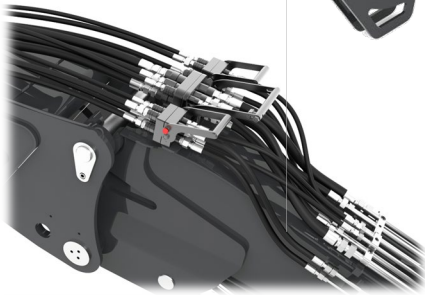
INTUITIVE DIALOG

Quick access buttons and two jog shuttle for easy navigation, precise engine speed and auto-idle management. Backlit controls enhance usability during nighttime operations.



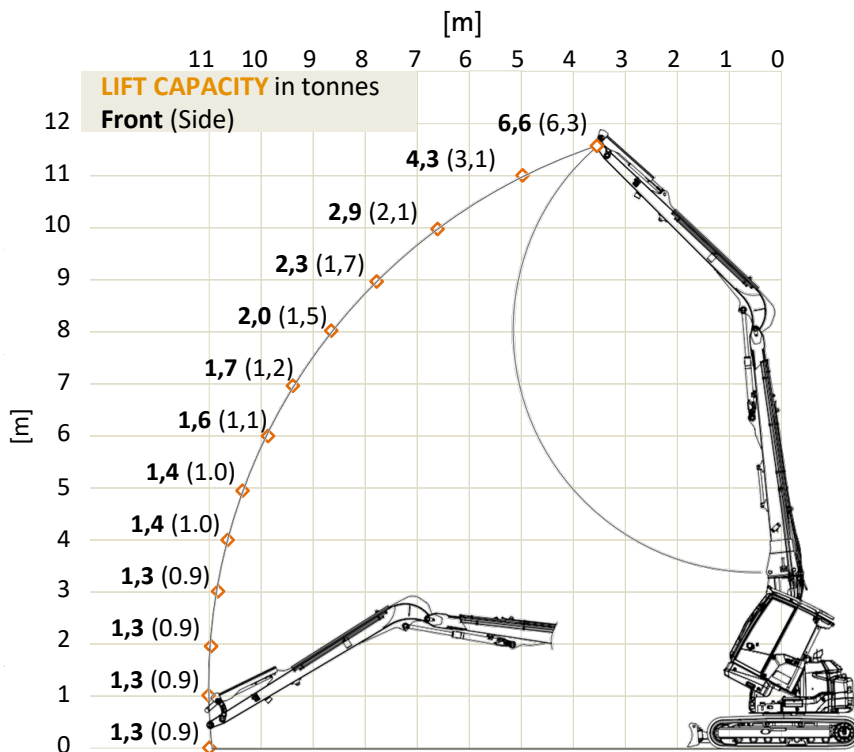
FAST HYDRAULIC ARM CHANGE OVER

The arm coupling is hydraulic and features fast connectors of the grouped hoses. It encourages operators to select the appropriate arm for each task. This improves on-site safety and helps safeguard the machine.



GREAT STABILITY ACROSS THE WORKING RANGE

The below diagram is with swappable demolition arm, no quick coupler, no attachment, extended undercarriage and blade down.

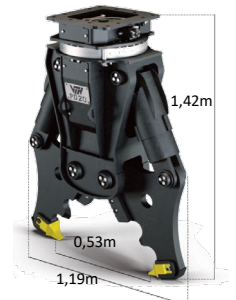


RECOMMENDED ATTACHMENTS

OILQUICK COUPLER
change over hydraulic attachments with minimal time. Other CNH couplers also available



CRUSHER
PD05
550kg
360°
30 tons

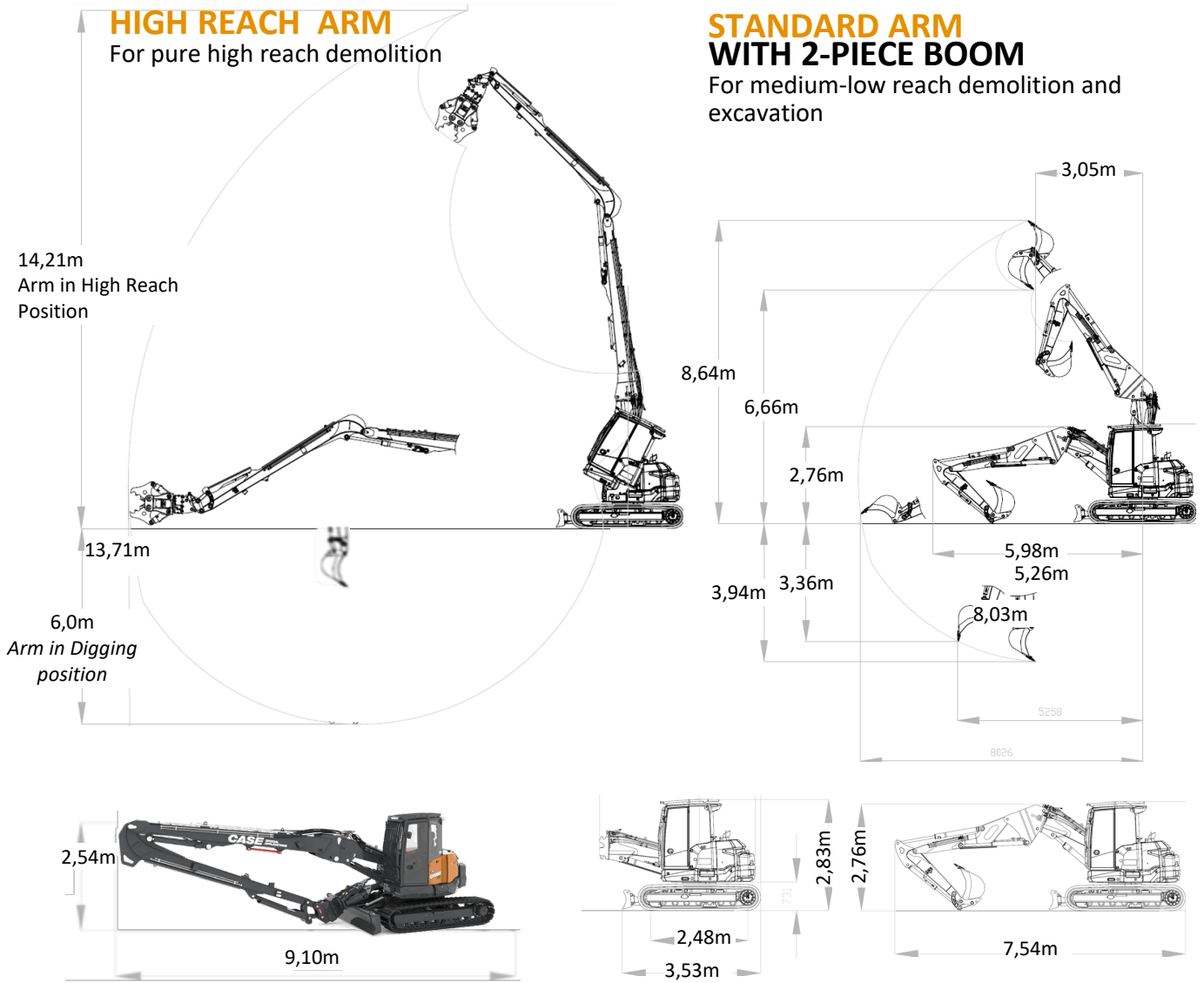


SORTING GRAB
MD100D
455kg
2/3 tons
0,2m³



CX135E XRD

DIMENSIONS AND SPECIFICATIONS



ENGINE

4-cylinder, 3.3-litre Yanmar Stage 5. Liquid-cooled.
Maximum power @2100 rpm 73 hp / 54 kW

HYDRAULICS

eOC (electronic Open Center) system by Bosch Rexroth
1 electronic variable displacement pump + 1 gear pump
Pumps 100 + 14 cm³
Flow rate 192 + 27 lpm
Maximum pressure 290 bar
AUX 1 single/double action 100lpm, 200 bar
AUX 2 double effect 70-90lpm, 290 bar
AUX 3 double effect (opt) 50-50lpm, 250 bar
AUX1 Mulcher Provision (opt)
"Constant Flow" additional pump 62 lpm, 200 bar

PERFORMANCES

Max travel speed (2 automatic speeds) 1,8 - 3,5 km/h
Rotational speed 4,5 rpm
Rimpull Force 11.020 daN

DIMENSIONS

Width 2,32 - 2,92 m
Height with FOPS level 2 guard 2,83 m
Rear radius 1,43 m
Max pin height 12,30 m
Tracks width 0,45 m
Number of rollers on each side 7+1

CAPACITIES

Diesel 105 l
Hydraulic Oil 85 l
Hydraulic system 135 l
Cooling system 23 l
Engine Oil 10 l

TRANSPORT WEIGHT

with 450 mm steel tracks and rubber pads:
High reach demolition arm 14,2 t
Digging arm with 2-piece boom 14,0 t

OPERATING WEIGHT

with 450 mm steel tracks and rubber pads, with quick coupler and crusher:
High reach demolition arm 14,8 t
Digging arm with 2-piece boom 14,6 t

CUSTOMIZED SOLUTIONS BY CASE SPECIAL APPLICATIONS

DESIGNED, PRODUCED AND CERTIFIED BY CASE IN EUROPE

Our Special Applications team based in Italy customizes machines for specific needs, including military and beyond. We offer CE-certified vehicles, safe and compliant, unlike some local modifications that are not always recertified. By choosing CASE, a CNH brand, you are supporting the European economy and thousands of jobs.



NEED TO CONTACT US?
specialapplications@cnh.com

NOTE: Standard and optional fittings can vary according to the demands and specific regulations of each country. The illustrations may include optional rather than standard fittings - consult your Case dealer. Furthermore CNH Industrial reserves the right to modify machine specifications without incurring any obligation relating to such changes.

Conforms to directive 2006/42/EC

